

# SPEC SHEET + MEASUREMENTS



## OGIO® Women's Grit Fleece Jacket. LOG727

### Product photo



With a unique and rugged texture, this jacket shows real grit. Heavy gauge knit, an embossed lining and understated details give it a sharp take on utility and comfort.

- 12.4-ounce, 100% poly knit bonded to 100% poly brushed-back fleece
- Zip-through cadet collar
- OGIO heat transfer label for tag-free comfort
- OGIO locker loop
- Embossed lining with subtle O pattern
- Reverse coil zipper with OGIO zipper pull
- Embroidered O on front and back
- Front zippered pockets
- Open cuffs and hem

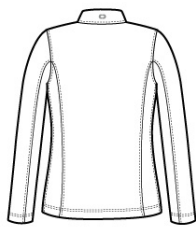
### CARE INSTRUCTIONS

Machine wash cold, only non-chlorine bleach when needed, tumble dry medium, warm iron if necessary.

### Sketches



front



back

# SPEC SHEET + MEASUREMENTS



## OGIO® Women's Grit Fleece Jacket. LOG727

### PRODUCT MEASUREMENTS

	XS	S	M	L	XL	2XL	3XL	4XL
Size	2	4/6	8/10	12/14	16/18	20/22	24/26	28/30
Body Length at Front	26	26 1/2	27	27 1/2	28	28 1/2	29	29 1/2
Bust	17 1/2	18 1/2	19 1/2	21	22 1/2	24	26	28
Sleeve Length	32	32 1/2	33	33 5/8	34 1/4	34 7/8	35 1/4	35 5/8

**Body Length at Front:** Measure from high point shoulder to lowest point of hem at front.

**Bust:** Measured across the chest one inch below armhole when laid flat.

**Sleeve Length:** Start at center of neck and measure down shoulder, down sleeve to hem.

### SIZE CHARTS

	XS	S	M	L	XL	2XL	3XL	4XL
Size	2	4/6	8/10	12/14	16/18	20/22	24/26	28/30
Bust	32-34	35-36	37-38	39-41	42-44	45-47	48-51	52-55

# SPEC SHEET + MEASUREMENTS



OGIO® Women's Grit Fleece Jacket. LOG727

## HOW TO MEASURE

---



### **BUST**

Measure under the arm and around the fullest part of the bust with arms down, keeping tape horizontal.

## COLORS

---



Blacktop  
PMS BLACK  
C



Diesel Grey  
Heather  
PMS BLACK  
C



Gear Grey  
PMS 7540C